



# ArrayHub<sup>®</sup>

Easy to install. Easy to use.

## LIMS for Genomics Data

### Core Facilities

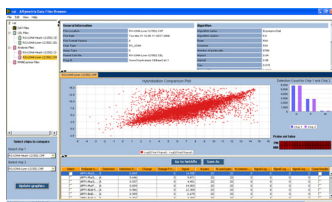
Complete solution which helps microarray core facilities to easily provide services externally and increase productivity.

### Affymetrix<sup>®</sup>

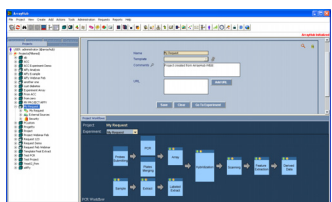
Affymetrix<sup>®</sup> GeneChip compatible<sup>™</sup> Data Management Software.

### MIAME

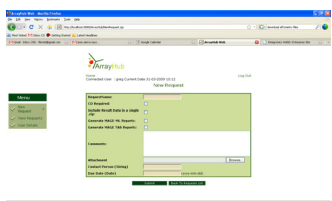
Compatible with MAGE-ML, MAGE-TAB, TAB2MAGE and GEO SOFT format.



Affymetrix Viewer



Workflow Submission



Core Facility Web Module

- **Efficiency.** ArrayHub<sup>®</sup> enables users to easily submit their experimental data and to retrieve, browse and search the information in an efficient way.
- **Compatible.** ArrayHub<sup>®</sup> supports multiple instruments data file formats like Affymetrix, Agilent, Illumina, cDNA and others.
- **Results.** Arrayhub<sup>®</sup> has powerful searching and reporting capabilities.
- **Customization.** Arrayhub<sup>®</sup> offers customized adaptation such as integration of specific workflows, specific data formats, data analysis scripts or PCR data and results.

ArrayHub<sup>®</sup> is a LIMS (Laboratory Information Management System) which stores, organizes and tracks Microarray Experiments performed on a lab.

ArrayHub<sup>®</sup> Core Facility Web Module is a framework which enables ArrayHub<sup>®</sup> LIMS organizations to provide custom microarray experimental service to external users and organizations.

ArrayHub<sup>®</sup> has been conceived to be the central repository of the microarray experiments data in a laboratory and it can be connected with third-party analysis software (Bioconductor R, Integromics analysis applications, Spotfire, GeneSpring, and others) to process raw data.

#### Requirements:

Client: Microsoft Windows XP or Vista  
Server: Linux, Microsoft Windows XP or Vista  
Pentium IV 1.5GHz or higher  
512 MB RAM (1GB recommended)  
MySQL<sup>™</sup>  
Java Runtime Environment 1.5 or higher  
Apache Tomcat 5 or higher