

Create predictive models.

Characterize and mine data.

The Professional and Lite Clients share the same versatile graphical user interface for protocol building and execution. Pipeline Pilot Web Port is browser based and allows end-users to parameterize and run existing protocols.

Client Graphical Interfaces

Different client interfaces to the SciTeGic Platform give you the work environment most suited to your needs. For the computational expert, our full-featured Professional Client provides the rich environment necessary for custom component development and protocol creation and deployment. The Lite Client is designed for users who need to parameterize existing protocols or build new protocols for their own use. Pipeline Pilot Web Port provides an intuitive Web browser interface that enables users to easily parameterize and run protocols that are built and deployed by local experts.

Whether your data processing needs are simple or more complex, there is a Pipeline Pilot Client interface that's right for you:

- Professional Client – Build new scientific components for your own personal use or to share with others
- Lite Client – Solve complex scientific problems by building powerful workflows
- Pipeline Pilot Web Port Client – Run standard analyses through an easy-to-use browser based interface

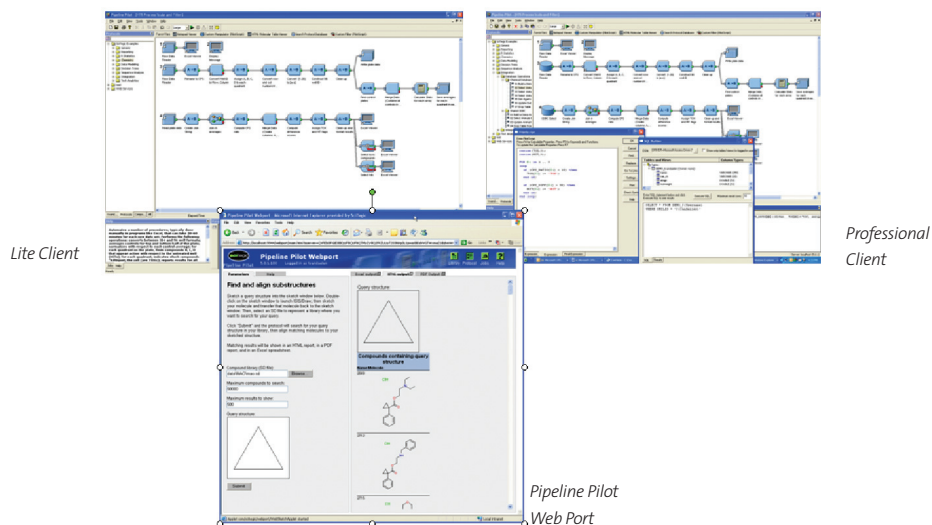
Further, by configuring integration or scripting components to control external tools, Professional Client users can extend the functionality of Pipeline Pilot and even control it from a command-line interface for batch processing of protocols. Telephone technical support is included with the Professional Client license (including help for questions requested by any Lite Client and Pipeline Pilot Web Port users in your organization).

Professional Client

Professional Client users have access to the full power of Pipeline Pilot. They can both create protocols for their own personal use and share and publish them with others. They can also customize Pipeline Pilot by creating or modifying

Lite Client

Lite Client users can build their own protocols from any of the components available on their server, except those for integration and scripting (reserved for Professional Client users). The graphical interface permits users to see the processing logic of a protocol, as well as its progress.



Pipeline Pilot Web Port

Pipeline Pilot Web Port's friendly and intuitive browser-based environment allows a broad community of users to access the power of Pipeline Pilot. The same protocols that Professional and Lite Client users run are accessible to Pipeline Pilot Web Port users. Through Internet Explorer, Pipeline Pilot Web Port users can browse available protocols and parameterize them to run their own data to suit their unique needs. A Pipeline Pilot Web Port client seat also makes it possible to run Pipeline Pilot through clients developed with one of our Client side SDKs.

System Requirements

Professional or Lite Client – Windows XP on a Pentium class PC (>500MHz) with 256 MB RAM

Pipeline Pilot Web Port Internet Explorer v5.5 or higher on Windows platforms with JavaScript enabled

* Pipeline Pilot requires at least one Professional Client. These clients are what provide you with necessary functions like protocol publication, server administration, and access to SciTeGic Technical Support.

How should you deploy Pipeline Pilot to your community? Different users have different needs. Here is how the options compare:

Feature	Professional Client	Lite Client	Pipeline Pilot Web Port
Use protocols published by others	✓	✓	✓
Execute existing protocols	✓	✓	✓
Edit protocol parameters	✓	✓	✓
Monitor protocol execution progress	✓	✓	✓ ¹
View protocol layout and logic	✓	✓	
Compose new protocols	✓	✓	
Modify existing protocols	✓	✓	
Manage jobs and results	✓	✓	
Create new components	✓		
Edit component interface	✓		
Integrate external tools	✓		
Employ script languages (incl. PilotScript)	✓		
Publish protocols for use by others	✓		
Command-line access for scheduling	✓		
End-user technical support	✓	2	2
Price for each named user	\$\$\$	\$\$	\$

1. Elapsed time of protocol execution only.

2. Pipeline Pilot Web Port and Lite Client users must get technical support from their professional users.

© 2008 Accelrys Software Inc. All brands or product names may be trademarks of their respective holders.



Accelrys Corporate Headquarters
10188 Telesis Court, Suite 100
San Diego, CA 92121-4779, USA
Tel: +1 858 799 5000

Accelrys European Headquarters
334 Cambridge Science Park
Cambridge, CB4 0WN, UK
Tel: +44 1223 228500

Accelrys Asia Headquarters
Nishi-shimbashi TS Bldg 11F
Nishi-shimbashi 3-3-1, Minato-ku,
Tokyo, 105-0003, Japan
Tel: +81 3 3578 3861